

1. Scope

This Material Standard covers the requirements for conduit standoff brackets for mounting conduit risers on round poles.

2. Material ID Numbers

This Material Standard applies to the brackets assigned the following District Material ID Numbers:

761123	15" without brace	Figure 1
761181	24" with brace	Figure 2
1002563	30" with brace	Figure 3

3. Reference Standards

Except as modified herein, the brackets shall meet the applicable requirements of the latest revisions of the following industry standards:

ASTM A109 Standard Specification for Steel, Strip, Carbon (0.25 Maximum Percent), Cold Rolled

ASTM A123 Standard Specification for Zinc (Hot-Dip Galvanized) Coatings on Iron and Steel Hardware

4. Material

Brackets shall be manufactured from steel plate, bar and channel and shall be free of sharp edges, burrs, cracks and other imperfections.

5. Dimensions

Brackets shall be dimensioned as shown in Figure 1 (15" bracket), Figure 2 (24" bracket) and Figure 3 (30" bracket).

6. Galvanizing

Brackets shall be hot dip galvanized in accordance with ASTM A123.

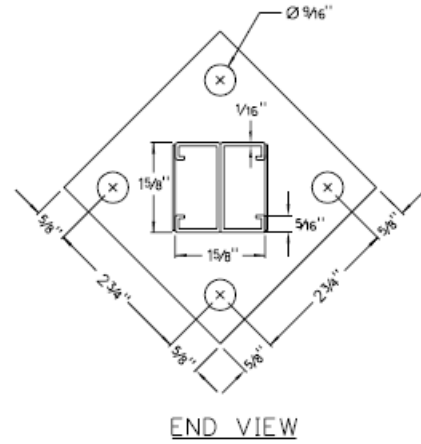
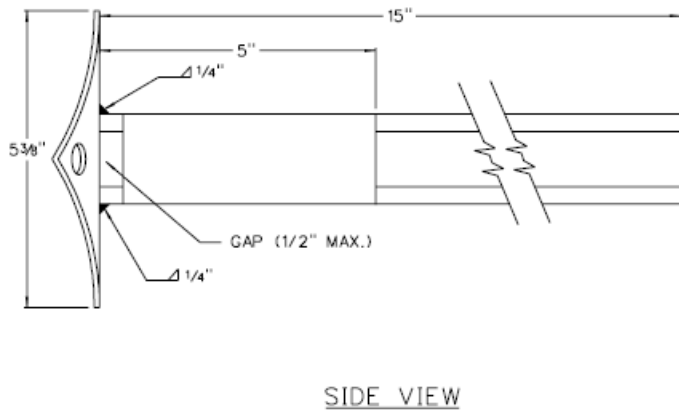
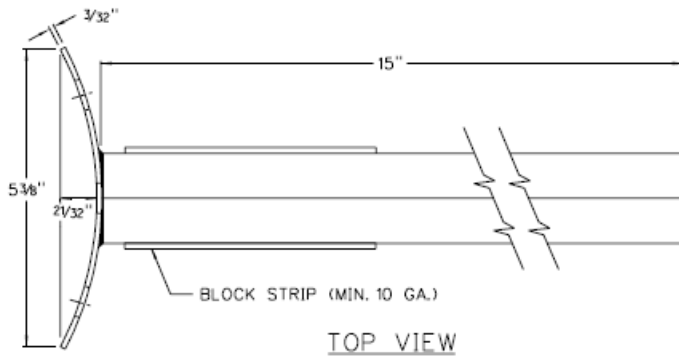


Figure 1

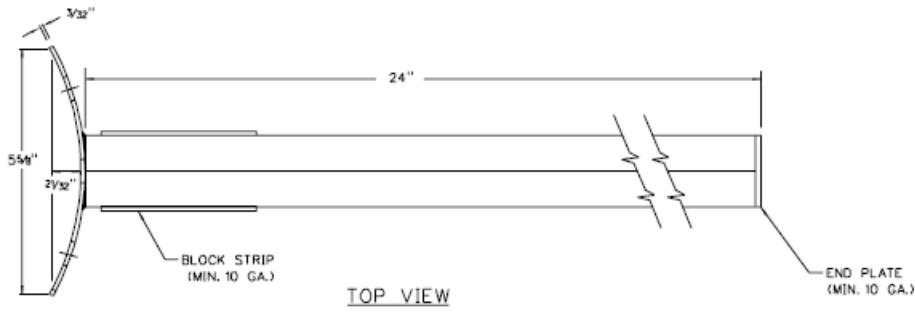
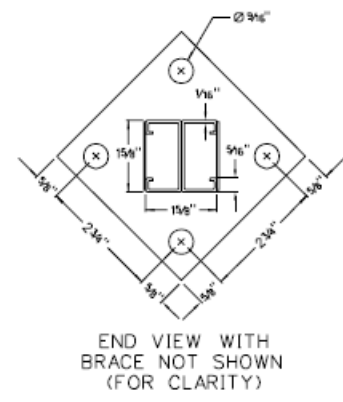
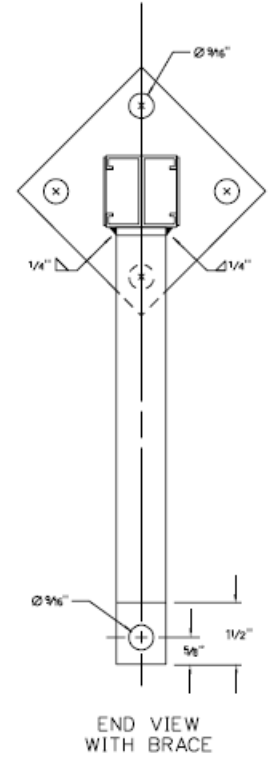
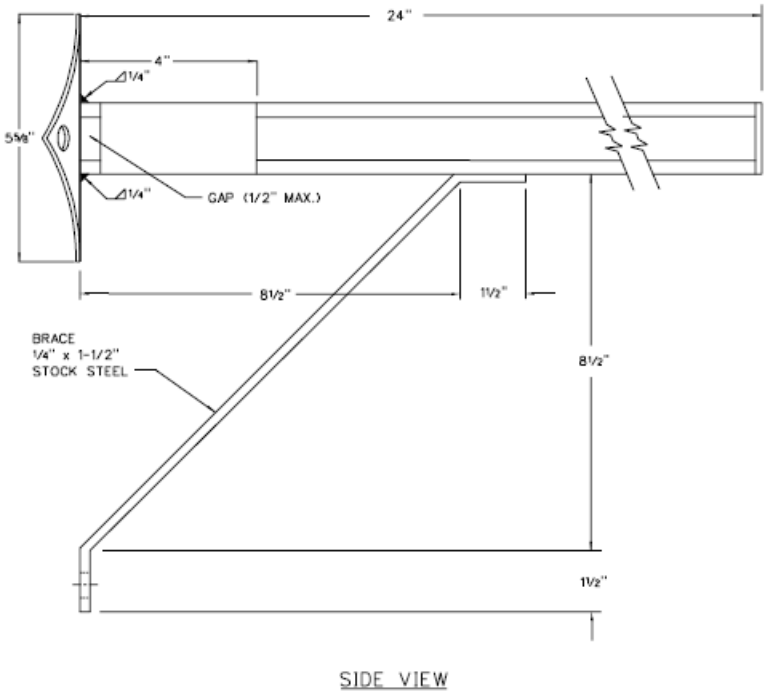


Figure 2



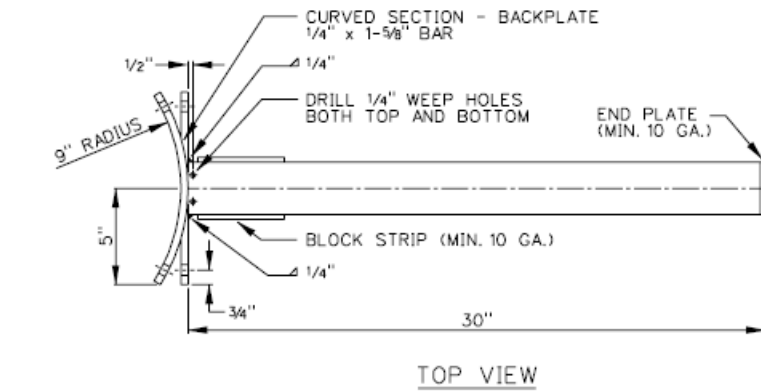
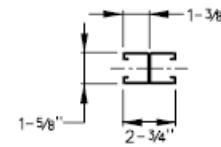
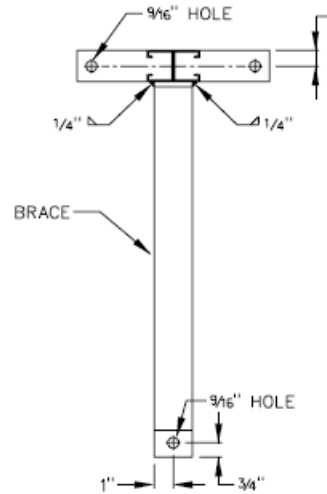
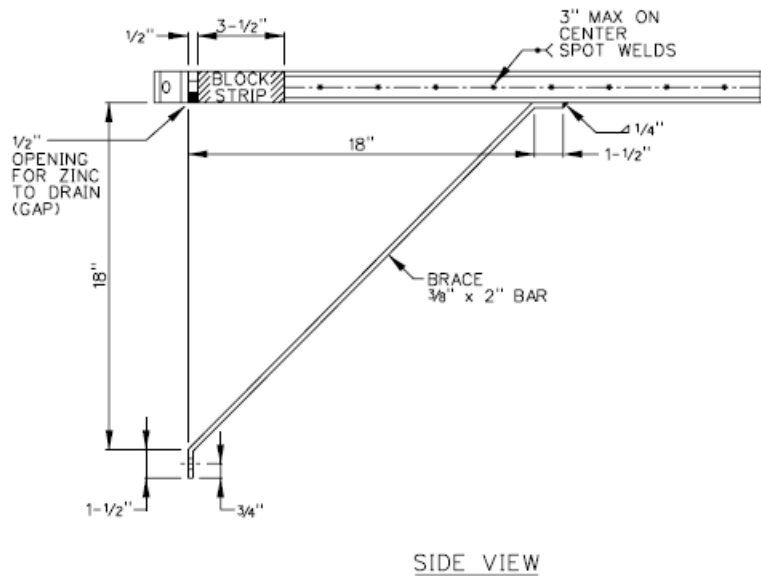


Figure 3



STEEL CHANNEL DETAIL
(SHOWN WITHOUT BLOCK STRIP AND END PLATE)



END VIEW
(SHOWN WITHOUT BLOCK STRIP AND END PLATE)

7. Packaging

No staples shall be used on the side of the box that opens. Boxes shall be stacked on the pallet in a manner where a label can be applied to the same side of each box without repalletizing. Brackets shall be packaged in heavy duty cardboard boxes as follows:

Bracket Size	Qty per Box
15"	10
24"	5
30"	3

8. Shipping

Product shall be shipped to the address specified on the Purchase Order on standard wood pallets designed for handling with a forklift.

9. Inspection

The District reserves the right to inspect all products upon receipt. Standoff brackets not conforming to this Material Standard, or damaged, will be rejected and returned at the Supplier's expense. Acceptance of delivery does not relieve the Supplier from meeting all of the requirements of this Material Standard.